

PLAINS & EASTERN CLEAN LINE

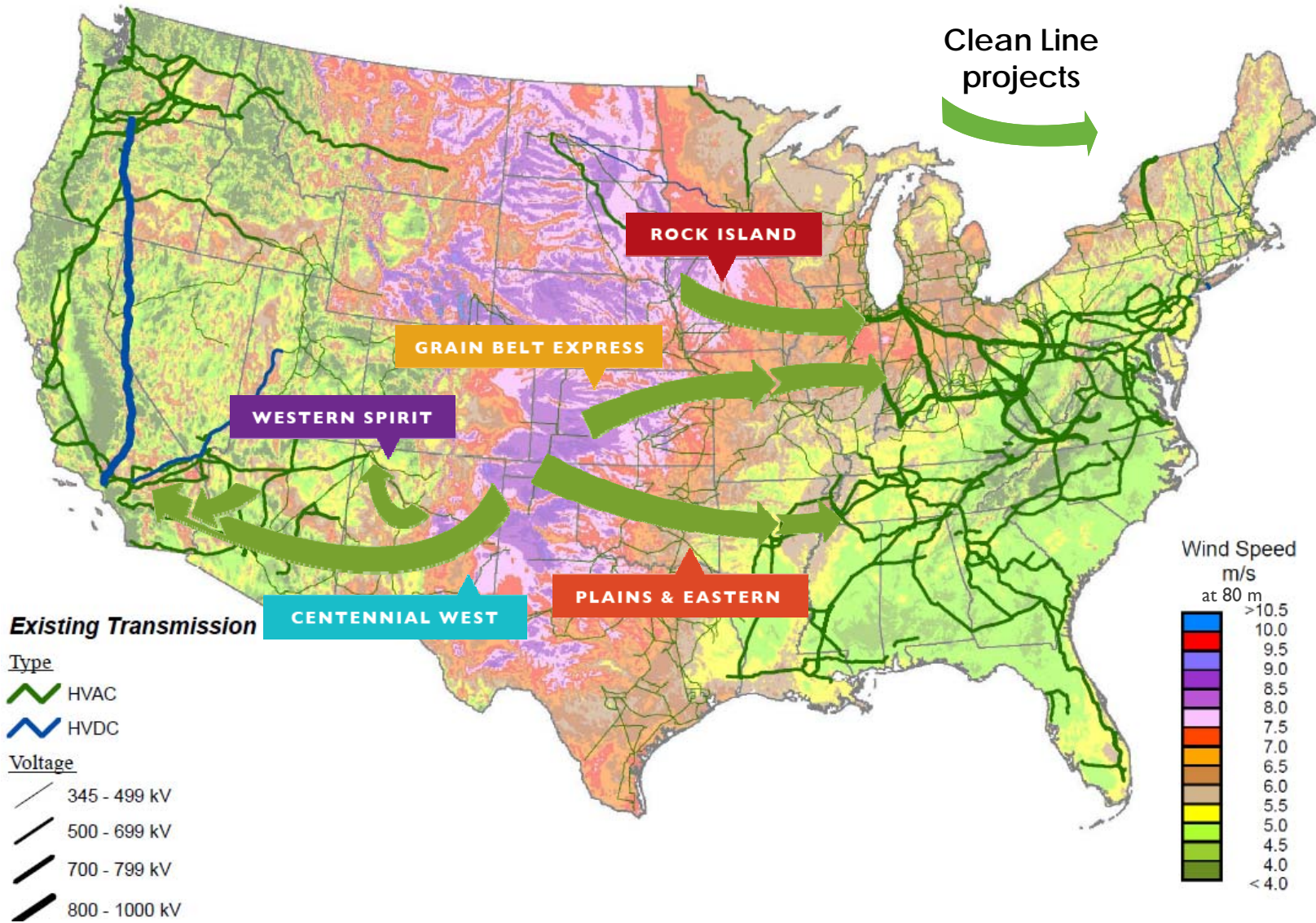
TREEDC

April 2014

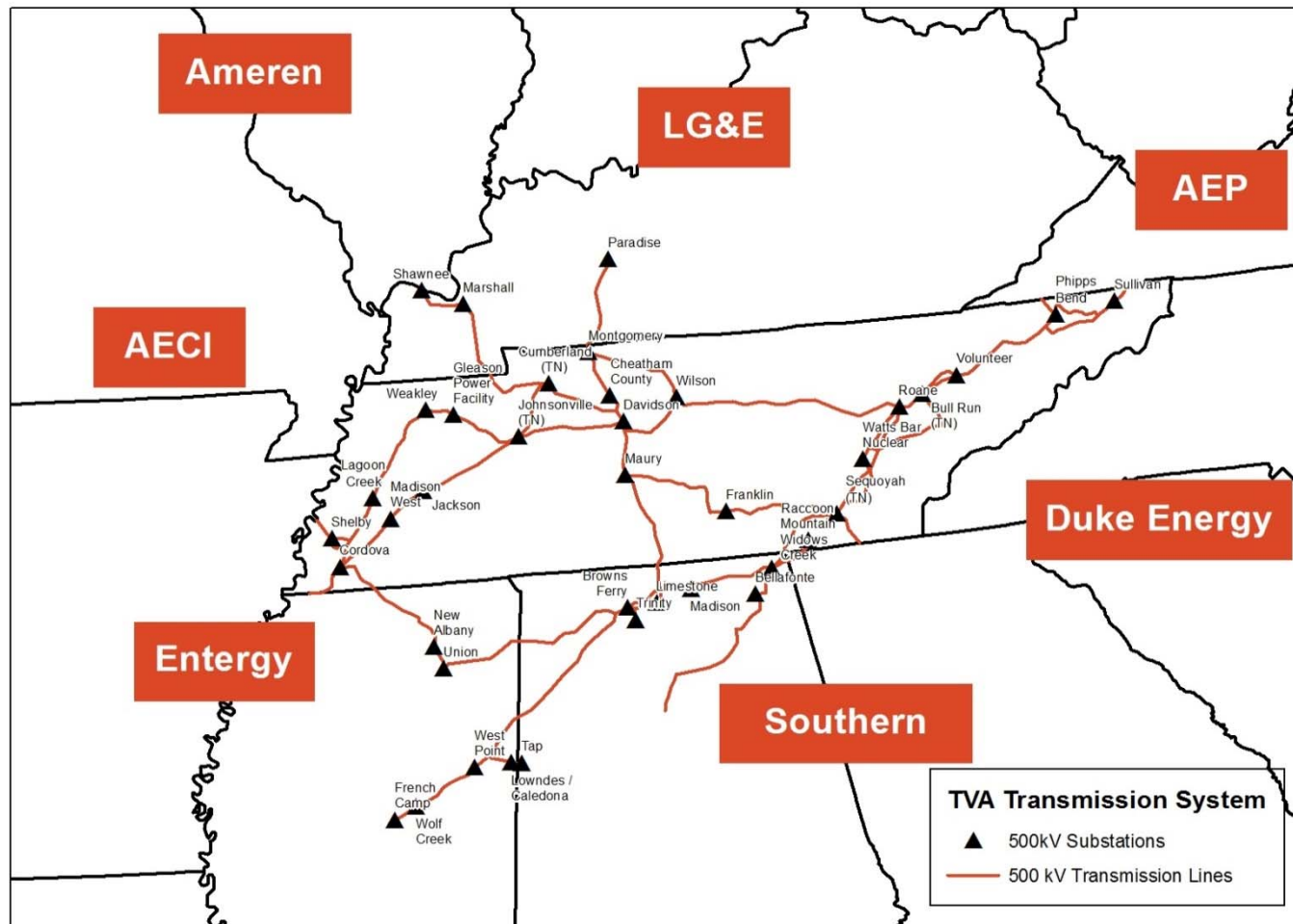
CLEAN LINE
ENERGY PARTNERS

The logo for Clean Line Energy Partners features the text "CLEAN LINE" in a bold, sans-serif font above "ENERGY PARTNERS" in a smaller, all-caps sans-serif font. Below the text are two curved, parallel lines in a light green color, resembling a stylized horizon or a path.

Clean Line's projects connect the best wind resources to load centers

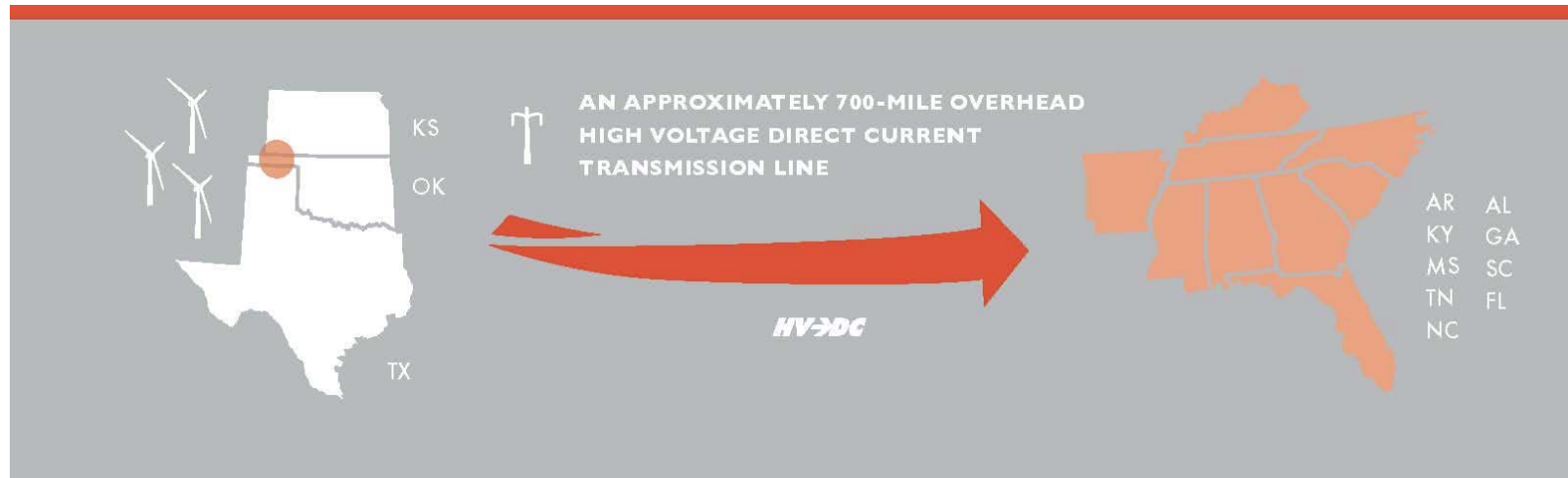


TVA can become the Southeast's renewable energy hub because of its extensive 500 kV network



Plains & Eastern Clean Line will deliver up to 3,500 MW of clean energy to the Mid-South and Southeast

PLAINS & EASTERN CLEAN LINE



\$2 BILLION IN PROJECT INVESTMENT



INCREASED MARKET COMPETITION



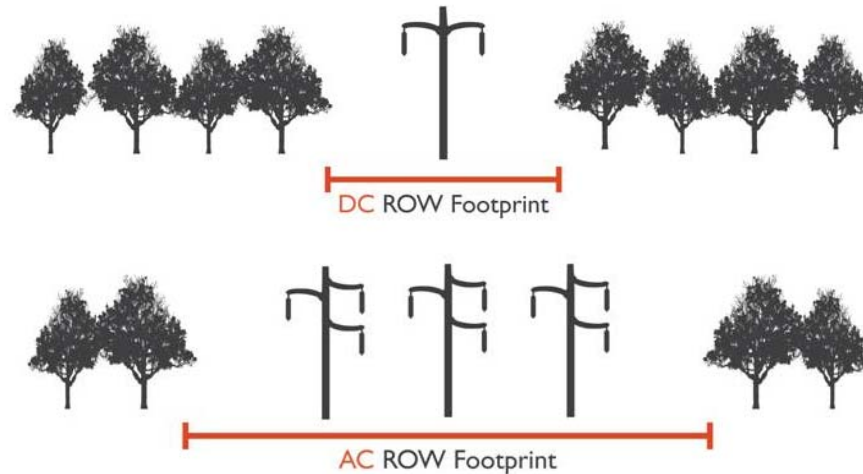
\$7 BILLION OF NEW WIND FARM INVESTMENTS



OVER 1 MILLION HOMES POWERED PER YEAR

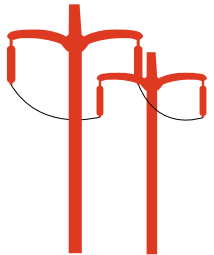
HVDC is the most efficient method to transmit large amounts of electricity over long distances

RIGHT OF WAY (ROW) FOOTPRINT



- **More efficient** — Lower line losses
- **Lower cost** — Requires less infrastructure, results in lower costs and lower prices for delivered renewable energy
- **Improved reliability** — Control of power flow enhances system stability and lowers cost of integrating wind
- **Smaller footprint** — Use narrower right-of-way than equivalent Alternating Current (AC)

Plains & Eastern Clean Line represents significant investment and large benefits to Tennessee



\$300 million investment in transmission facilities in western Tennessee



Access to clean, affordable energy



Hundreds of direct jobs during construction



Property tax revenue to Tipton and Shelby Counties

Plains & Eastern Clean Line will enable Memphis to add renewable energy to its list of hubs

Renewable Energy

Major hub for competitive renewable energy

Air

2nd busiest cargo airport in the United States
- FedEx North American hub
- UPS 3rd largest air-ground sort facility in US

Highway

Ground shipping to more than 60% of the US population within 24 hours

Rail

3rd largest rail center in the U.S.

River

2nd largest inland port on the Mississippi River
4th largest inland port in the U.S.

Plains & Eastern Clean Line will result in cleaner air and better conservation of water resources



ENVIRONMENTAL BENEFITS



12 million tons
carbon dioxide
reduced



8 thousand tons
nitrogen oxide reduced



16 thousand tons
sulfur dioxide reduced



249 pounds
mercury reduced



4.4 billion gallons
saved

Source: DNV GL, 2013.

National Grid is a key investor in Clean Line Energy

The logo for National Grid, featuring the word "nationalgrid" in a blue, lowercase, sans-serif font. The "n" and "g" are significantly larger than the other letters.

National Grid brings extensive experience in building, owning, and operating large transmission projects in the United States and overseas



National Grid in the United States

- owns and operates more than 8,600 miles of transmission
- serves more than 7 million electricity and natural gas customers



National Grid joins Clean Line's existing investors that include private equity firm ZBI Ventures

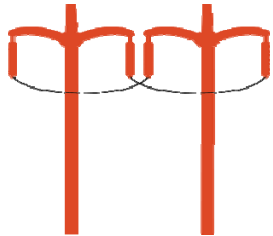
Plains & Eastern Clean Line supports sustainability goals for Tennessee communities served by TVA



Low Rates



Responsibility and Economic Development



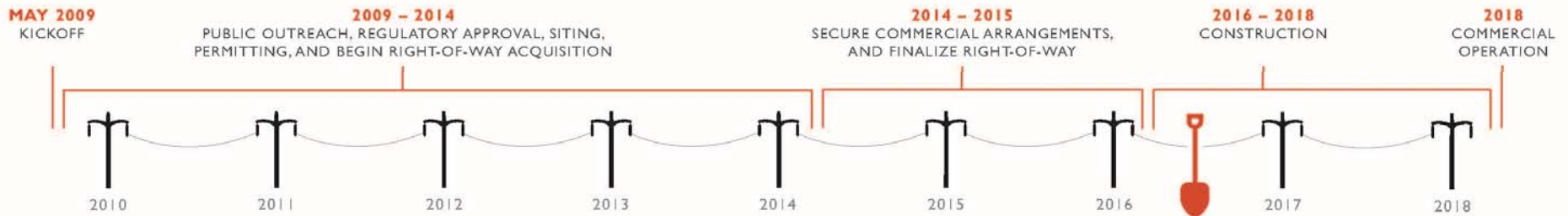
Greater reliability



Cleaner Air

A methodical and transparent development process is underway that targets commercial operation in 2018

PLAINS & EASTERN CLEAN LINE SCHEDULE



Building transmission to connect clean energy to communities that need it- Memphis, TN

PLAINS & EASTERN

CLEAN LINE

www.plainsandeasterncleanline.com



Follow Clean Line on Twitter
[@cleanlineenergy](https://twitter.com/cleanlineenergy)

Visit Clean Line's YouTube channel
www.youtube.com/user/cleanlineenergy